

CEJ-2216TX Plus

Receiving and discharging system supports 10,000 meters

Industrial High Speed Dye Sublimation Printer



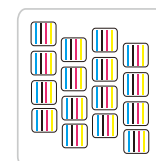
Grando Sublimation Ink



* 2.2m Sixteen I3200 Print Heads Speed

600x600dpi - 1pass	690 m ² /h
600x1200dpi - 2pass	360 m ² /h

16pcs I3200 Heads
CMYK



Technical Characteristics

- Media loading and take-up system supporting 1000 meters transfer paper, 10,000m optional.
- Negative pressure ink supply system ensures more stable ink supply for long time printing
- Linear motor + magnetic encoder strip helps to realize stable, precise and silent printing
- high-strength rigid structure and more reasonable take-up and payoff system to provide stable printing effect



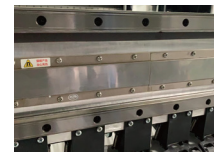
Wide applications in clothing, home decoration fabrics, sampling, shirt, canvas bags, bolster, scooter, flags, textile gadgets etc.

Advanced electrical board system; 16pcs Epson i3200-A1 print heads with 3.5pl ink droplets and up to 1200dpi resolution; Industrial printer design extends lifespan of the print heads.



● Technical Specifications

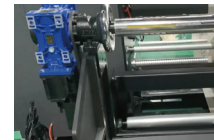
Model	CEJ-2216TX Plus	
Print Head	16pcs I3200-A1 Print Heads	
Droplet Size	3.5pl	
Printing Width	86.6 in. (2200 mm)	
Printing Speed	1pass(600x600dpi): 7274 sqft (690 sqm/h) 2pass(600x1200dpi): 3875 sqft (360 sqm/h)	
Ink Cartridges	Type	Dye Sublimation Ink
	Supply	Negative pressure ink supply system
	Color	CMYK / CMYKLCMLKLLK
Print Media	Heat Transfer Paper	
Print media control	Air expansion shaft Take-up System	
Dryer	External Automatic Air Heat Integrated Dryer	
Moisturizing unit	Automatic Cleaning and Moisturizing Integrated Captop	
RIP Software	RIIN Beidou Textile Version, Maintop6.0, photoprint, ONYX, NeoStampa, PrintFactory, etc.	
File Format Supported	JPG / TIFF / PDF, etc	
Computer Configuration	Operating System	win7 64 bit / win10 64 bit
	Hardware Requirements	CPU: i7 Processor (9th generation or higher) Hard Disk 500g+ (solid state disk) Operating Memory 16g, Graphics Card: ATI display 4G memory, Motherboard: ASUS, Gigabyte
	Data transmission	USB3.0
Power requirement	Input Voltage	AC 220 V ± 5%, 16A, 50 HZ± 1
	Printer	3500W
	Drying unit power	Maximum 15.5kw
Dimensions(with stand)	158(W)x109(D)x68.9(H) in. 4020(W)x2767(D)x1750(H) mm	
Package Dimensions	162(W)x112.8(D)x72.8(H) in. 4120(W)x2867(D)x1850(H) mm	
Working Environment	Temperature 15-32 degrees C, Humidity: relative humidity: 40-70 (non condensing)	
Standard Components	External Automatic Air Heat Integrated Dryer, Low Ink Alarm System, Air Shaft Media Loading and Take-up, and Automatic Moisturizing and Cleaning Init	



Mute Linear Motor System, no belt, no pvc encoder strip; Increase the Carriage moving precision and Span life;



Magnetic grid, the Carriage drop point more precision



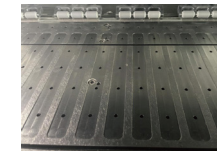
Air expansion shaft rubber strip rolls collection and release, to ensure that the collection of material more stable and flush



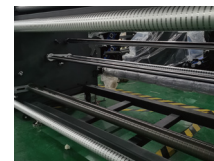
High precision angle sensor



Negative pressure ink supply system: good for long time printing and cleaning



Vertical slotted air guide platform, making the paper surface more flat



Pendulum rod tension structure



2 external infrared drying units, Precise control of drying temperature, reduce energy consumption